



## Event FAQs

### **What types of Event reservations does Coloma Resort offer?**

The Event area includes up to 100 guests without a reservation.

Specialized event sites

Lighting

Picnic table placement

Other special requests will be considered

### **How can I make a reservation for a special event?**

You can book an event reservation by contacting our reservations team via phone (530) 621-2267 or email [camping@colomaresort.com](mailto:camping@colomaresort.com)

We book up to a year in advance. We recommend booking as soon as possible, to ensure your preferred dates.

### **What is included in the event area and is there a fee?**

The event site when available is \$10,500.00 and includes:

Private Event Area: sites 26-28A, Oak Flat, 29, 31 and 32

Parking sites: 97-101

The Country Cottage.

Picnic Table placement

Signage

We have beautiful lighting for the evening of your event. String lights above the grass and other lights throughout the area. Additional accommodations may incur extra charges.

### **Do I need a coordinator?**

While an event coordinator is very helpful in managing larger groups, it is not required. Our team is available to assist with certain logistics and planning.

### **Is there a contract to be signed?**

Yes, there is a contract and deposit required. All reservations are considered tentative until a signed contract & deposit is received and accepted by Coloma Resort.

A 50% non-refundable deposit is required to secure event area

The deposit will be applied towards the total charge for the event indicated on the invoice.

### **What is the cancellation policy for event reservations?**

A 50% non-refundable deposit is required

The remaining non-refundable balance is due no later than 3 months prior to the arrival date.

A final minimum guarantee of attendance must be provided, no less than fourteen (14) days prior to event.

**Is event insurance required?**

Yes, event insurance is required for all event bookings. This can be provided through homeowner or rental insurance or a policy with \$1 million in coverage.

**Is there parking for our guests?**

Yes, Coloma Resort has a designated area for guest parking on the upper level.

**Are there specific restrooms and showers available for guests?**

There are five free community facility options on-site for all guests conveniently located throughout the resort.

**Are we allowed to park in the event area?**

We would prefer only loading and unloading in that area and free of vehicles. However if you have a special needs vehicle, you may park only in sites 26 and 27.

**Are we allowed to camp in the event area?**

Camping is not allowed in the event area.

**What kind of tables are available?**

We have rustic 5 foot square wood tables with detached benches. Our friendly staff will set up the tables and remove them after the event.

**Are there chairs for the event area?**

We will do a onetime set up and take down of wood benches for the event area. If you prefer chairs, you may rent from a Party Rental Company and have them delivered.

**Do you have lighting?**

Yes, we have beautiful lighting for the evening of your event. String lights above the grass and other lights throughout the area.

**Do you allow outside Food and other Vendors ?**

Yes, you may bring your own food and beverages or arrange for outside catering.

A \$300 vendor fee applies for outside catering only.

We will need a business license and certificate of liability insurance for each vendor. Please note: food storage and refrigeration is not available.

**Can I have music?**

Yes, live music or a DJ is allowed. There is a county ordinance that all amplified music must be off by no later than 10:00 PM. This is also the quiet time for the County and the Resort.

There is a restriction of 60 decibels at the property line. If the music is too loud, you may be asked to turn it down to the proper level.

## **Is Wi-Fi available at the resort?**

Yes, Wi-Fi is available in most areas of the resort. However, due to our natural setting, connectivity may vary in certain locations.

## **Do you hold Rentals for us and our family and friends?**

Yes, we can hold accommodations for you and your guests for up to 3 months prior to the event. If the units are not reserved by you or your guests by the end hold date, they will be released to other guests of the Resort.

## **What are the check-in and check-out times for group stays?**

Check-in: Between 3:00PM and 10:00PM for all guests

Check-out: Prior 11:00AM for cabins, Prior 12:00PM for RV and tent sites

## **Are there quiet hours at the resort?**

In accordance with county regulations and to be respectful to all guests, quiet hours are between the hours of 10:00pm and 8:00am daily.

## **Do you allow children and pets?**

Yes, children are welcome.

Yes, we love your pets too. We do ask that they are not left unattended, cleaned up after and always on a leash. Pets are not allowed in many of our rental accommodations.

## **How do we handle waste and recycling during our stay?**

We encourage eco-friendly practices and provide waste and recycling bins throughout the resort. Please help us keep Coloma Resort clean and green. All guests are responsible for removal of all belongings and trash from their site/cabin in our conveniently located trash facilities throughout the resort.

## **What if I have more than the 100 guests?**

If you have more than 100 guests attending that are not staying at the Resort, there will be a \$25. Per person charge.

If you have guests staying at the Resort, they do not count for the additional charges.

*Example # 1: 200 guests at the wedding. 50 of the guests are staying in the Resort. You would only pay for the additional 50 guests.*

*Example # 2: 150 guests at the wedding. 50 are staying in the Resort. You would not have to pay for any additional guests.*

## **Can we have candles on the tables?**

Yes, you may have candles as long as they have something under them so that they do not damage the tables and are contained so not to fall over and start a fire.



## Overview of Accommodations for Group Gatherings and Events

### South Fork Cabins

Enjoy comfortable lodging in our South Fork Cabins, featuring:



- Layout: Main bedroom, fold-out sofa or futon in the living room, kitchen area, heating and air conditioning, and private bathrooms with showers. Some cabins include a loft with an additional bed.
- Capacity: Varies by cabin; pets allowed in designated cabins.
- Ideal For: Families and groups seeking comfort and convenience.
- View South Fork Cabins: <https://www2.colomaresort.com/south-fork-cabins/>

### Unique Authentic Wagons

Experience a one-of-a-kind stay in our authentic wagons:



- Layout: Accommodates up to four guests with a queen bed and bunk bed, equipped with a small fridge, heating, and air conditioning. Nearby bathroom access.
- Ideal For: Adventurous groups looking for a unique experience.
- View Wagons: <https://www2.colomaresort.com/wagon-rentals/>

*Continued on the next page...*

## Glamping Options

### 1849 Tent Village

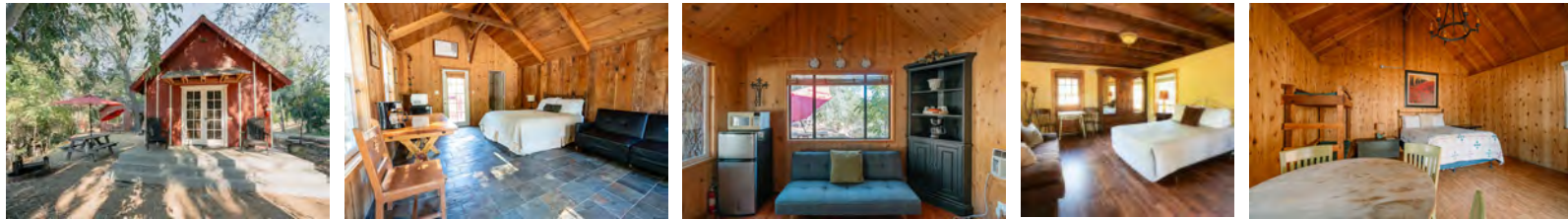
Indulge in luxury camping with our 1849 Tent Village:



- Layout: Each tent features a queen-sized bed and a futon, accommodating up to four guests. Private deck with Adirondack chairs for outdoor relaxation.
- Ideal For: Groups seeking a blend of comfort and nature.
- View Tent Village: <https://www2.colomaresort.com/1849-tent-village/>

## Miner's Cabins

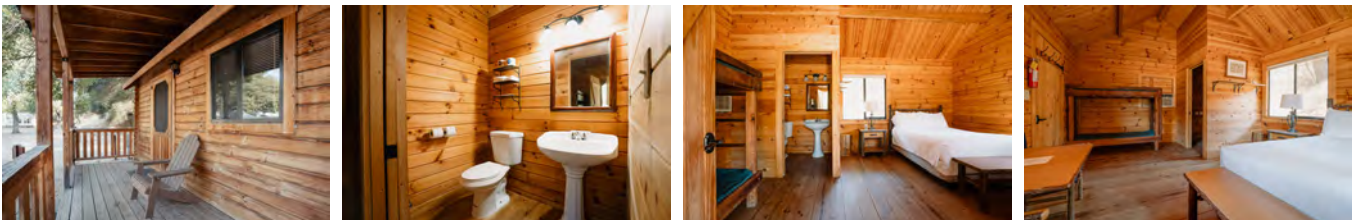
Our Miner's Cabins offer a rustic yet comfortable stay:



- Layout: Furnished with a futon or bunk beds, air conditioning, and electrical outlets. Restrooms and showers are nearby.
- Capacity: Ideal for small groups; pets are not permitted.
- View Miner's Cabins: <https://www2.colomaresort.com/miners-cabins/>

## Prospecting Gold Rush Cabins

Experience the charm of our Gold Rush Cabins:



- Layout: Equipped with a king-sized bed and a twin-sized bunk bed, cooking is done outside at the picnic table and fire pit.
- Capacity: Maximum of four guests; pets are not allowed. 2-night minimum required.
- Features: New air-conditioning and heating for added comfort.
- View Gold Rush Cabins: <https://www2.colomaresort.com/gold-rush-cabins/>

*Continued on the next page...*

## Rustic Boomtown Cabins

Discover the rustic charm of our Boomtown Cabins:



- Layout: Main room with sturdy twin-size bunk beds, air conditioning, and a private half bathroom. Close proximity to river access.
- Capacity: Pet-friendly, making it perfect for families with furry friends.
- View Boomtown Cabins: <https://www2.colomaresort.com/boomtown-cabins/>

## Country Cottage

Relax in our spacious Country Cottage with river views:



- Layout: 2 bedrooms (queen beds), 2 bathrooms, a full kitchen, and a living room with a sleeper sofa. Screened-in porch with a twin bed.
- Capacity: Accommodates up to six guests; pets are not allowed. 2-night minimum required.
- Features: Beautiful backyard and deck overlooking the South Fork of the American River. Bed and bath linens provided.
- View Country Cottage: <https://www2.colomaresort.com/country-cottage/>

***Each accommodation option is designed to enhance your group gathering experience, providing comfort and convenience in a stunning natural setting. For more information or to make a reservation, please contact us today!***

# Camp Activities at Coloma Resort

At Coloma Resort, we offer a variety of activities for guests of all ages to enjoy the outdoors, connect with nature, and create lasting memories. From thrilling group games to relaxing family-friendly events, there's something for everyone!

## Activities Include:

**Gold Panning:** Experience a piece of California history with gold panning sessions, perfect for all ages.

**Summer Series Live Music:** Enjoy live performances during our summer evenings, a great way to unwind and enjoy the resort atmosphere.

**Playgrounds:** Multiple playgrounds for children to enjoy and explore.

**Swimming Pool:** Refresh and relax in our seasonal swimming pool.

## Sports & Games:

Large Chess and Checkers sets

Basketball hoop

Soccer net

Sports equipment available for check-out at The Store with a valid ID

**Surrounding Hikes and Biking Trails:** Discover the scenic trails surrounding the resort.

## Local Events and Attractions:

Local Events – Discover nearby happenings, from fairs to seasonal festivals.

Local wineries and restaurants

State Park Events – Visit the nearby park for guided hikes, educational programs, and family-friendly activities.





# Coloma RESORT

Coloma Resort has several beautiful areas for wedding ceremonies. Our picturesque back drop of the river and white-water rapids, the historical bridge and Mount Murphy.

We do have limited availability for private wedding ceremonies. If your preferred dates are unavailable, we recommend reserving your Wedding accommodations at Coloma Resort and exploring other beautiful local venues for your Wedding Ceremony.

Nearby options include the historic Grange Hall, charming churches within the surrounding State Park, or the scenic wineries, such as Gold Hill Winery.

**The Grange Hall:** Built in 1926 as a community gathering space, the Grange offers a versatile venue for a range of events, from exercise classes to weddings, receptions, and memorials. It's a perfect choice for those looking for a historic, intimate setting.

**State Park Churches:** Several picturesque churches within the State Park provide a serene and spiritual backdrop for wedding ceremonies, blending natural beauty with historic charm.

**Local Wineries:** For a more rustic or elegant atmosphere, consider one of the nearby wineries like Gold Hill Winery, which offers stunning views and a unique wine-country experience for your ceremony.





# Facility Map

6921 MOUNT MURPHY ROAD  
COLOMA, CA 95613



Water & Electric



Water, Electric & Sewer



Tents Only



South Fork Cabins



Miners Cabins



Group Tenting Sites



Check in Kiosk



Restrooms/Showers



Trash Enclosures



Dog Waste Stations

Event Sites



MAIN ENTRANCE



AMERICAN RIVER • SOUTH FORK



TO AUBURN HIGHWAY 49 TO PLACERVILLE