



Group Reservation FAQs

Whether you're planning a family reunion, corporate retreat, school trip or special celebration, Coloma Resort offers the perfect setting for memorable group experiences. We provide river front access, outdoor activities and a variety of accommodations.

Read below for helpful information about booking group reservations.

1. What types of group reservations does Coloma Resort offer?

Organized Groups-10 or more sites or accommodations with one person or organization responsible for payment, subject to availability and may be offered a 50% non-refundable deposit option. Booking fees may apply.

Facilitated Groups-10 or more sites or accommodations with single point of contact to facilitate, where individuals are responsible for making their own reservations. Subject to availability and have standard booking terms. Booking fees and lock site fees may apply.

2. How can I make a group reservation?

You can book an group reservation by contacting our reservations team via phone (530) 621-2267 or email camping@colomaresort.com

We book up to a year in advance. We recommend booking as soon as possible, to ensure your preferred dates.

3. What amenities are available for groups at Coloma Resort?

Groups have access to amenities such as picnic areas, group camping sites, private event spaces, outdoor activity areas, and catering services through Argonaut Cafe.

4. Are there specific packages available for groups?

Yes, we offer tailored packages that include accommodation, meals, and activities. Our team can help customize a package that fits your group's needs.

5. What size is considered a group?

A group is typically defined as 10 or more sites and or lodging combined. We can accommodate groups of various sizes, so please contact our team for specific arrangements.

6. Do I need a wagon master?

While a group facilitator is helpful in managing larger groups, and helps facilitate information between the group and the resort, it is not required.

The first point of contact will be considered the group's facilitator. Our team is available to assist with certain logistics and planning.

9. Is there a fee for using the shelter/covered areas, Outlook Shelter, Valley and Riverside outdoor kitchens for gathering?

Additional gathering areas may incur extra charges.
Pre-arrangement and signed contracts are needed in advance.

10. What's the fee to pay if we have to cater from outside?

A \$300 vendor fee applies for outside catering only.
We will need a business license and certificate of liability insurance for each vendor.
Please note: food storage and refrigeration is not available.

11. Are there specific restrooms and shower facilities available for guests?

South Fork Cabins & Bunkhouses: Full bath
Boomtown Cabins: Half bath
Miner Cabins 600 & 604: Half bath
Free Community Facilities: There are five free community facility options on-site for all guests conveniently located throughout the resort

12. Can I reserve accommodations in group blocks?

Yes, we offer the option to reserve accommodations in blocks to ensure your group stays together. Group blocks can be held for up to 48 hours. We strive to accommodate specific site preferences.

13. What is the cancellation policy for group reservations?

Cancellation policies vary based on the type of reservation: booking fees are not refundable

• Organized Groups:

Applies to organized groups with single coordinator responsible for contract and invoice.
A 50% non-refundable deposit is required for ALL Organized Group Reservations.
The guest list and remaining balance is due no later than 30 days prior to the arrival date.
Cancellations within 30 days of arrival are non-refundable

• Facilitated Groups:

Applies to groups where each member of the group is responsible for booking their own individual reservation.
Family RV and tent sites require a 48-hour notice to receive a credit or a full refund, less a \$15.00 fee plus \$5.99 booking fee per reservation.
Group sites, cabins and holidays, require a 2-week notice to receive a credit or full refund, less a \$25.00 fee plus \$5.99 booking fee per reservation.

14. Can I bring my own food and beverages?

Yes, you may bring your own food and beverages or arrange for outside catering.

15. What activities are available for groups?

Groups have access to a variety of amenities, including:

Outdoor activity areas: Seasonal swimming pool, gold panning, fishing, basketball, corn hole, ping pong, chess, checkers, connect four, two playgrounds, soon-to-be pickleball courts and horseshoe pits.

Nearby attractions: Museum within walking distance, Visitor center, blacksmith, state park facilities, hiking, biking, historic downtown Placerville, local wineries and breweries.

Amenities: group camping sites, free Wi-Fi, fire rings and picnic tables on every site/cabin, air conditioning and heat provided in all cabins, dining areas upon request when available. and catering services (through Argonaut Cafe).

16. Is there Wi-Fi available at the resort?

Yes, Wi-Fi is available in most areas of the resort. However, due to our natural setting, connectivity may vary in certain locations.

17. What are the check-in and check-out times for group stays?

Check-in: Between 3:00PM and 10:00PM for all guests

Check-out: Prior 11:00AM for cabins, Prior 12:00PM for RV and tent sites

18. Are there quiet hours at the resort?

In accordance with county regulations and to be respectful to all guests, quiet hours are between the hours of 10:00pm and 8:00am daily.

19. Are pets allowed at the resort?

Pets are welcome at Coloma Resort, but only in designated sites and specific cabins. Please inform our reservations team in advance. There may be an additional fee for pets. Pet waste stations are conveniently located throughout the resort.

20. What should we do in case of an emergency during our stay?

In case of an emergency, please contact our front desk immediately. We have staff on-site 24/7 to assist with any urgent needs.

21. Do you provide transportation for group activities?

While we do not provide transportation, we can recommend local transport services. For large groups, we can assist in coordinating transport arrangements.

22. Is there a minimum or maximum group size for reservations?

We can accommodate groups of various sizes, from small family gatherings to large corporate retreats. Contact our Group Reservations team to discuss your specific needs.

23. How do we handle waste and recycling during our stay?

We encourage eco-friendly practices and provide waste and recycling bins throughout the resort. Please help us keep Coloma Resort clean and green. All guests are responsible for removal of all belongings and trash from their site/cabin in our conveniently located trash facilities throughout the resort.

24. What should we bring for our group stay?

We recommend bringing comfortable clothing, swimwear, sunscreen, insect repellent, and any personal items you may need. For camping, please bring appropriate gear.

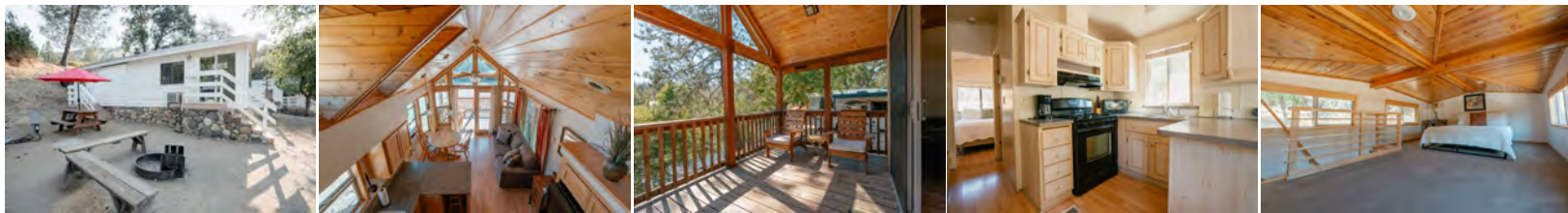
If you have any further questions, please don't hesitate to contact us.



Overview of Accommodations for Group Gatherings and Events

South Fork Cabins

Enjoy comfortable lodging in our South Fork Cabins, featuring:



- Layout: Main bedroom, fold-out sofa or futon in the living room, kitchen area, heating and air conditioning, and private bathrooms with showers. Some cabins include a loft with an additional bed.
- Capacity: Varies by cabin; pets allowed in designated cabins.
- Ideal For: Families and groups seeking comfort and convenience.
- View South Fork Cabins: <https://www2.colomaresort.com/south-fork-cabins/>

Unique Authentic Wagons

Experience a one-of-a-kind stay in our authentic wagons:



- Layout: Accommodates up to four guests with a queen bed and bunk bed, equipped with a small fridge, heating, and air conditioning. Nearby bathroom access.
- Ideal For: Adventurous groups looking for a unique experience.
- View Wagons: <https://www2.colomaresort.com/wagon-rentals/>

Continued on the next page...

Glamping Options

1849 Tent Village

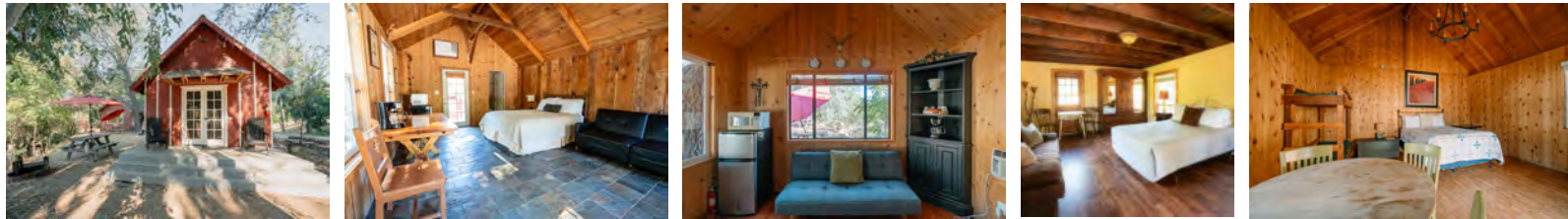
Indulge in luxury camping with our 1849 Tent Village:



- Layout: Each tent features a queen-sized bed and a futon, accommodating up to four guests. Private deck with Adirondack chairs for outdoor relaxation.
- Ideal For: Groups seeking a blend of comfort and nature.
- View Tent Village: <https://www2.colomaresort.com/1849-tent-village/>

Miner's Cabins

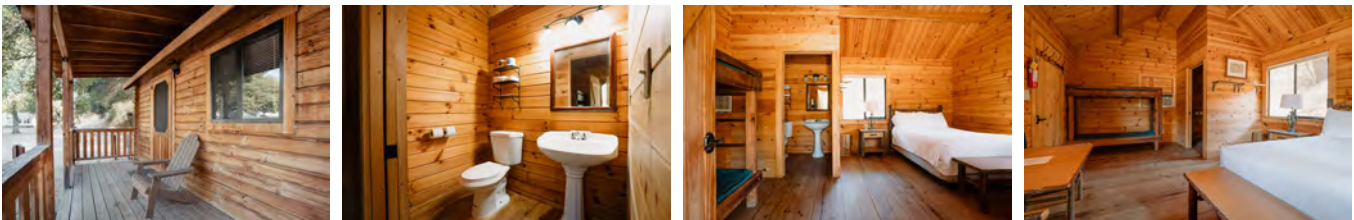
Our Miner's Cabins offer a rustic yet comfortable stay:



- Layout: Furnished with a futon or bunk beds, air conditioning, and electrical outlets. Restrooms and showers are nearby.
- Capacity: Ideal for small groups; pets are not permitted.
- View Miner's Cabins: <https://www2.colomaresort.com/miners-cabins/>

Prospecting Gold Rush Cabins

Experience the charm of our Gold Rush Cabins:



- Layout: Equipped with a king-sized bed and a twin-sized bunk bed, cooking is done outside at the picnic table and fire pit.
- Capacity: Maximum of four guests; pets are not allowed. 2-night minimum required.
- Features: New air-conditioning and heating for added comfort.
- View Gold Rush Cabins: <https://www2.colomaresort.com/gold-rush-cabins/>

Continued on the next page...

Rustic Boomtown Cabins

Discover the rustic charm of our Boomtown Cabins:



- Layout: Main room with sturdy twin-size bunk beds, air conditioning, and a private half bathroom. Close proximity to river access.
- Capacity: Pet-friendly, making it perfect for families with furry friends.
- View Boomtown Cabins: <https://www2.colomaresort.com/boomtown-cabins/>

Country Cottage

Relax in our spacious Country Cottage with river views:



- Layout: 2 bedrooms (queen beds), 2 bathrooms, a full kitchen, and a living room with a sleeper sofa. Screened-in porch with a twin bed.
- Capacity: Accommodates up to six guests; pets are not allowed. 2-night minimum required.
- Features: Beautiful backyard and deck overlooking the South Fork of the American River. Bed and bath linens provided.
- View Country Cottage: <https://www2.colomaresort.com/country-cottage/>

Each accommodation option is designed to enhance your group gathering experience, providing comfort and convenience in a stunning natural setting. For more information or to make a reservation, please contact us today!

Camp Activities at Coloma Resort

At Coloma Resort, we offer a variety of activities for guests of all ages to enjoy the outdoors, connect with nature, and create lasting memories. From thrilling group games to relaxing family-friendly events, there's something for everyone!

Activities Include:

Gold Panning: Experience a piece of California history with gold panning sessions, perfect for all ages.

Summer Series Live Music: Enjoy live performances during our summer evenings, a great way to unwind and enjoy the resort atmosphere.

Playgrounds: Multiple playgrounds for children to enjoy and explore.

Swimming Pool: Refresh and relax in our seasonal swimming pool.

Sports & Games:

Large Chess and Checkers sets

Basketball hoop

Soccer net

Sports equipment available for check-out at The Store with a valid ID

Surrounding Hikes and Biking Trails: Discover the scenic trails surrounding the resort.

Local Events and Attractions:

Local Events – Discover nearby happenings, from fairs to seasonal festivals.

Local wineries and restaurants

State Park Events – Visit the nearby park for guided hikes, educational programs, and family-friendly activities.



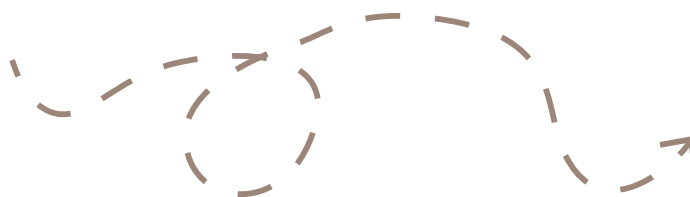
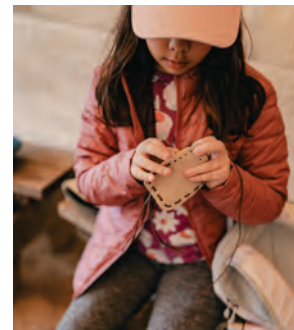
Gold Rush Family Adventure

at Coloma Resort

10am-2pm

Compliment your camping adventure with a full day of Gold Rush Activities lead by a Naturalist.

10-10:30 meet at Coloma Resort Store for leather pouch making.



10:30-11:30 Gold Panning lesson by a naturalist



11:30- 2 pm naturalist led tour of historical points of interest within the Marshall Gold Discovery State Historic Park



2 pm on - explore living history days on your own.

Program includes Naturalist instruction, materials for making a gold pouch and a gold vial, and State Park entrance fee. Bring your own bag lunch and water in a backpack, wear comfortable walking shoes, bring a hat and sunscreen.

\$50 per participant, with a minimum charge of \$250 for groups less than 5 people.

*schedule may vary depending on the size and ability of the group.

Register in advance - info@colomaresort.com



Gold Panning for the whole Family!

Gold panning demo offered every Saturday at the front store at 10am.

Gold panning Supplies available for sale.



Serving:

Coffee, Lunch, Pastries, Gelato and more

Just a short walk across the one lane bridge. Turn left and it's the second Historical building.

Scan the QR Code below for our Current Hours and Menu



Call and order in advance for a faster pick up 530.626.7345

Gold Rush Family Adventure *at Coloma Resort* 10am-2pm

10-10:30 meet at Coloma Resort Store for leather pouch making.

10:30-11:30 Gold Panning lesson by a naturalist

11:30- 2 pm naturalist led tour of historical points of interest within the Marshall Gold Discovery State Historic Park

Compliment your camping adventure with a full day of Gold Rush Activities lead by a Naturalist.

2 pm on - explore living history days on your own.

Program includes Naturalist instruction, materials for making a gold pouch and a gold vial, and State Park entrance fee. Bring your own bag lunch and water in a backpack, wear comfortable walking shoes, bring a hat and sunscreen.

\$50 per participant, with a minimum charge of \$250 for groups less than 5 people.

*schedule may vary depending on the size and ability of the group.

Register in advance - info@colomaresort.com





COLOMA EXPERIENCE PROGRAM & PRICING

Embark on an unforgettable journey that seamlessly blends history, adventure, and comfort with Coloma Experience. Whether you're here for the day or planning an extended stay, we've curated a range of experiences that cater to your preferences.

CABINS

Gold Rush Cabins – King Bed with a Set of Bunk Beds (Sleeps 4)

Bunk Houses – 2 Queen Beds with one or two sets of Bunk Beds (Sleeps up to 6)

South Fork Cabins – Full amenities Sleep up to 4 or 6 depending on Unit

Boomtown Cabins All Bunk Beds Sleeps up to 6

(Bunkhouses and Boomtown Cabins are available on weekends only from Jan 15 to May 30 and Sept 15 to Dec 15)

MEALS

- **Miners Burger Lunch served in a Souvenir Gold Pan - \$22**
1/3 pound beef patty served on an Oil browned bun with all the fixins, kettle chips, house made chocolate chip cookie, and a beverage. Served in a Souvenir Gold Pan.
- **Miners Burger Lunch served in a Plate - \$18**
Same Miners Burger Lunch only served in a plate.
- **Taco Bar Dinner \$22**
Seasoned chicken meat, fresh smashed pinto beans, cilantro lime rice, whole kernel corn, cheese, lettuce, tomato, onion, sour cream, chips, house made salsa, beverage and a chocolate chip cookie.
- **Spaghetti Dinner - \$22**
Thin Spaghetti served with your choice of Chicken Meat or Marinara Sauce, Fresh Garlic Bread, Garden Green Salad Bar with choice of dressing, beverage and a decadent fudge brownie
- **French Toast Breakfast - \$18**
Thick French Toast served with Turkey Sausage Links, Scrambled Eggs, Fresh Fruit, Cereal, Orange Juice and Hot Cocoa. (Coffee for adults)
- **Biscuit Breakfast \$18**
Homemade Buttermilk Biscuits, Turkey Sausage Patties, Country Potatoes, Scrambled Eggs, Fresh Fruit, Cereal, Orange Juice and Hot Cocoa. (Coffee for adults)

Note All meals are based on minimum of 40 guests and prices are plus sales tax and gratuity of 20%

PRESENTERS AND ACTIVITIES

Mountain Man Presentation or Native American Speaker \$300.00 For up to 50 guests

Please send all inquiries to colomaexperience@colomaresort.com • 530-621-2267



**Scan here for
the website!**

